

MSU Firecracker SMHJG Show



JULY 11 | JULY 12
2401 S KANSAS EXPRESSWAY |
SPRINGFIELD, MO 65807

MSU
Summertime
SMHJA Show

Show Manager: Natalie Mook
605-695-9037
nmook@missouristate.edu

Hunter/Eq Judge: Charea Martin
Jumper Judge: TBA

Jumpers: July 11 start 5:00 pm
Hunter/Eq: July 12 start 8:00 am

Online Entries: SMHJA.HorseSpot.net



Grand Prix Sponsor



<https://www.midmobank.com/>

Division Sponsors

Children Ground Poles

Turn Back Creek Construction

Adult Group Poles

Lois Nckell

Children Crossrail Hunter 11U

Turn Back Creek Construction

Children Crossrail Hunter 12-17

Kaydence Sports Medicine & Rehab

Children's Crossrail Equitation 17U

Turn Back Creek Construction

Hunter Hack

**Appaloosa Horse Rescue and
Sanctuary, Inc.**

Short Stirrup Hunter

JK Equestrian

Long Stirrup Hunter

Green Valley Stables, LLC

Long Stirrup Equitation

**Bethany Longfellow
Photography & Design**

2'3" Intermediate Hunter

Smile Zone Pediatric Dentistry

2'3" Intermediation Equitation

Intrepid Equestrian

2'6" Low Hunter

JMS Tru Heaven

18" Jumper

Green Valley Stables, LLC

.60 Meter Jumper

Hein Benefits Group

.70 Meter Jumper

Oak and Ivy Farm & Stables

.80 Meter Jumper

Mid-Missouri Bank

Information

- VACCINATIONS/COGGINS: Present record of flu/rhino vaccination & negative coggins documentation prior to schooling or riding. Upload to HorseSpot

Schooling

- Friday: Open 4:00-5:00pm, breaks between heights
- Saturday: All Hunters 6:30-7:30 AM, Xrails & Ground Poles 7:30-8:00, breaks for other heights
- Outdoor Covered arena will be during the show on Friday and Saturday for light schooling. No more than 5 people at a time. We ask that you use the arena to school and not stand or walk around.
- No more than 10 horses in the arena at one time. We ask that you respect the announcer when they announce that schooling is closing.
- Showing Exhibition (“not to be judged”) will be permitted for \$10 per class. Non-showing horses are permitted, \$20 for the day.

Showing Expectations

- Rider classifications are used as follows: Children are riders 17 years old and younger on December first of the previous year. Adult Amateurs are riders 18 years old and over on December first of the previous year and who do not engage in activities that would classify him/her as a professional per the current USEF Rule Book. Professionals are riders who engage in activities described in the current USEF Rule Book and may compete in open classes. Rider classification status must be provided on SMHJA membership form.
- Dress Code: Riders should wear polo type shirt or shirt with collar (small left chest insignia allowed, but no t-shirts), conservative sweaters may also be allowed, breeches or jodhpurs, gloves(optional), and English style riding boots. Conservative colored ASTM approved headgear is mandatory when mounted. Formal hunt attire may be worn without penalty. Spurs of the unrowelled type, crops, and bats are optional. If themed jumper classes are offered, riders are considered entries as long as they are wearing an ASTM approved headgear, shirt, breeches or jodhpurs and English style riding boots along with wearing themed-related attire and/or outfit. Anyone not conforming to the dress code will not be considered an entry in the class.
- Open Card: To move the show along, the over fences classes (Hunter I & Hunter II) in each division will be run on an “open card.” **Riders will be put in groups to keep show on schedule. MUST CHECK IN WITH GATE.**
- Parking: Trailers can park in back gravel lot or on any concrete/driveway surface as long as you are not blocking the road.
- Spectators: Join us, we have stadium seating and room for lawn chairs. **NO DOGS ALLOWED.**
- Concessions available: Cash/Venmo/Paypal accepted
- Severe Weather Policy: Show will continue during weather. If there is severe weather, riders are encouraged to bring horses into the arena. Show management will make decisions on continuing or postponing show.

Jumper Classes

18" Jumper

Open. No oxers. Clean rounds return for a shortened course timed jump off. One timed round in second class. If competing in this division, the horse/rider combo cannot jump higher than .60 meters at the same show.

54. 18" Jumper TBL II Sec 2a

55. 18" Jumper TBL II Sec 1

.60 Meter Jumper

Open. (2') Clean rounds return for a shortened course timed jump off. One timed round in second class. If competing in this division, the horse/rider combo cannot jump higher than .70 meters at the same show.

56. .60 M Jumper TBL II Sec 2a

57. .60 M Jumper TBL II Sec 1

.70 Meter Jumper

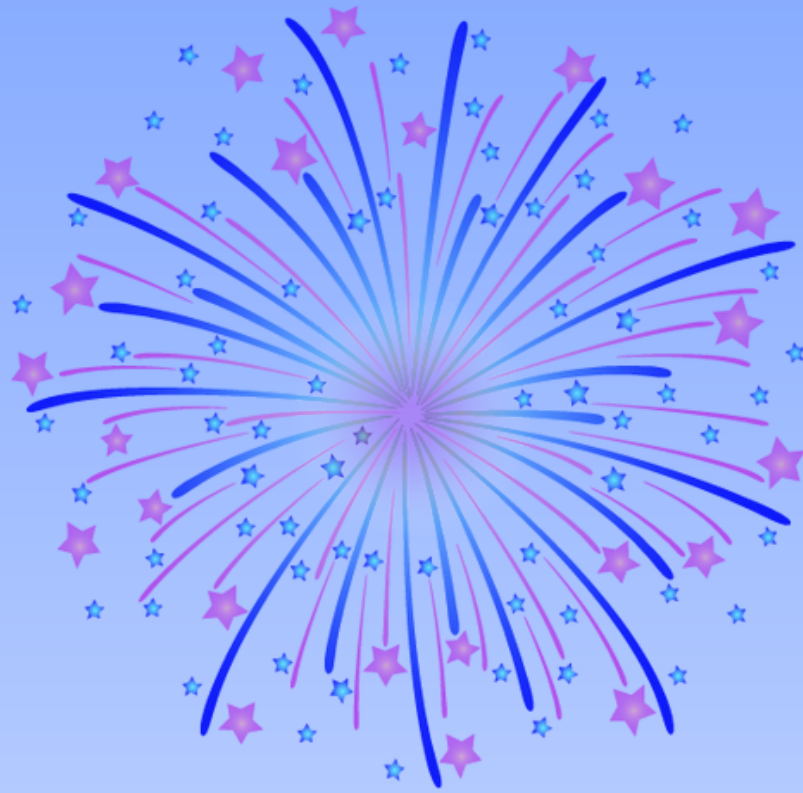
Open. (2'3") Clean rounds return for a shortened course timed jump off. One timed round in second class. If competing in this division, the horse/rider combo cannot jump higher than .80 meters at the same show.

58. .70 M Jumper TBL II Sec 2a

59. .70 M Jumper TBL II Sec 1

102 Spill N' Thrill

Jump two jumps 2' height with cup of water. The rider with the most liquid at the end wins a special prize!



.80 Meter Jumper

Open. (2'6") Clean rounds return for a shortened course timed jump off. One timed round in second class.

60. .80 M Jumper TBL II Sec 2a

61. .80 M Jumper TBL II Sec 1

.85-.95 Meter Jumper

Open. (2'9"-3') Clean rounds return for a shortened course timed jump off. One timed round in second class.

62. .85-.95M Jumper TBL II Sec 2a/b

63. .85-.95M Jumper TBL II Sec 1

1.0 m Meter Jumper

Open. (3'3") Clean rounds return for a shortened course timed jump off. One timed round in second class.

64. 1.0 M Jumper TBL II Sec 2a/b

65. 1.0 M Jumper TBL II Sec 1



Hunter/ Equitation Classes

Ground Poles Divisions. Canter not required. Obstacles consist of (4) poles on the ground. Trot not required in over poles class. Walk and trot ARE required in flat class. If competing in this division, horse/rider combo cannot jump higher than GP at the same show

Children Ground Poles Hunter Division

- 1.Children's Ground Poles Under Saddle
- 2.Children's Ground Poles Over Fences

Children Ground Poles EQ Division

- 3.Children's Ground Poles on the Flat
- 4.Children's Ground Poles Eq Over Fences

Adult Amateur Ground Poles Hunter Division

- 5.Adult Amateur Ground Poles Under Saddle
- 6.Adult Amateur Ground Poles Over Fences

Adult Amateur Ground Poles Eq Division

- 7.Adult Amateur Ground Poles on the Flat
- 8.Adult Amateur Ground Poles Eq Over Fences

Crossrail Divisions. Fence height not to exceed 18". Canter not required. Walk/trot only in under saddle or flat class. If competing in this division, horse/rider combination cannot jump higher than 2' at the same show.

Children 11 yrs & Under Crossrail Division

9. 11yrs & U Children Crossrail Hunter Under Saddle
10. 11yrs & Under Children Crossrail Hunter I
11. 11yrs & Under Children Crossrail Hunter II

Children 12-17 year Crossrail Division

12. 12-17 Children Crossrail Hunter Under Saddle
13. 12-17 Children Crossrail Hunter I
14. 12-17Children Crossrail Hunter II

Children's Crossrail Equitation Division 17U

15. Children's Crossrail Equitation on the Flat
16. Children's Crossrail Equitation Over Fences

Adult Amateur Crossrail Division

17. Adult Amateur Crossrail Hunter Under Saddle
18. Adult Amateur Crossrail Hunter I
19. Adult Amateur Crossrail Hunter II

Adult Amateur Crossrail Equitation Division

20. Adult Amateur Crossrail Equitation on the Flat
21. Adult Amateur Crossrail Equitation Over Fences

Short Stirrup Hunter & Equitation Divisions. Child riders 11 yrs & under. Fences 18" to 2' no oxers. Walk, trot, and canter required in flat class. If competing in this division, a horse/rider combination cannot jump higher than 2'3" at the same show.

Short Stirrup Hunter Division

22. Short Stirrup Hunter Under Saddle
23. Short Stirrup Hunter I
24. Short Stirrup Hunter II

Short Stirrup Equitation Division

25. Short Stirrup Equitation on the Flat
26. Short Stirrup Equitation Over Fences

Long Stirrup Hunter& Equitation Divisions.

Child riders 12-17 yrs old. Fences 18" to 2' no oxers. Walk, trot, and canter required in flat class. If competing in this division, a horse/rider combination cannot jump higher than 2'3" at the same show.

Long Stirrup Hunter Division

- 27 .Long Stirrup Hunter Under Saddle
28. Long Stirrup Hunter I
29. Long Stirrup Hunter II

Long Stirrup Equitation Division

30. Long Stirrup Equitation on the Flat
31. Long Stirrup Equitation Over Fences

100. Leadline.

Run between classes, as close to NOON as possible. Must pre-enter. Age 7 and under. Walk only. SMHJA dress code is not enforced, but ASTM approved headgear and boots with a heel mandatory. Riders cannot show in any other classes at the same show. All participants will be given a blue ribbon and prize. To qualify for year end awards, riders must participate in two separate shows



Hunter/ Equitation Classes

2' Schooling Divisions

Adult Amateur riders. Fences 2'. No oxers. Walk, trot, and canter required in flat class. If competing in this division, a horse/rider combination cannot jump higher than 2'3" at the same show.

Schooling Hunter Division

32. Schooling Hunter Under Saddle

33. Schooling Hunter I

34. Schooling Hunter II

Schooling Equitation Division

35. 2' Schooling Equitation on the Flat

36. 2' Schooling Equitation Over Fences

Hunter Hack. Open. Manners and suitability for pleasure riding to be emphasized. May be asked to show on a loose rein, lengthen stride, hand gallop, collect, or back. Requires the horse to be shown at a walk, trot, and canter both ways of the ring, and jump two fences (up to 2') at the judge's discretion.

37. Hunter Hack

101 Working Equitation Challenge

Fences up to 2'3" in height. Riders will be judged on their "handiness" in the ring. Course will consist of trot jumps, dropping of stirrups, and other medal type tests. Special Prize for the winner!

Pony Hunter Division

2'3" Children 17 & under. Ponies 14.2 hands & under. All ponies must present an official SMHJA Pony Height Card or other recognized Pony Height Card.

38. Pony Hunter Under Saddle

39. Pony Hunter I

40. Pony Hunter II

2'3" Intermediate Hunter Division

Open. If competing in this division, horse/rider combination cannot jump higher than 2'6" at the same show.

41. Intermediate Hunter Under Saddle

42. Intermediate Hunter I

43. Intermediate Hunter II

2'3" Intermediate Equitation Division

Child/Adult Amateur. If competing in this division, the horse/rider combination cannot jump higher than 2'6" at the same show.

44. 2'3" Intermediate Equitation on the Flat

45. 2'3" Intermediate Equitation over Fences

2'6" Low Hunter Division

Open. If competing in this division, the horse/rider combination cannot jump higher than 3' at the same show.

46. 2'6" Low Hunter Under Saddle

47. 2'6" Low Hunter I

48. 2'6" Low Hunter II

2'6" Low Equitation

Child/Adult Amateur. If competing in this division, the rider combination cannot jump higher than 3' at the same show.

49. Low Equitation on the Flat

50. Low Equitation Over Fences

2'9"-3' Working Hunter

Open.

51. 2'9"-3' Working Hunter Under Saddle

52. 2'9"-3' Working Hunter I

53. 2'9"-3' Working Hunter II